

SIPA Israel Delegation 2020



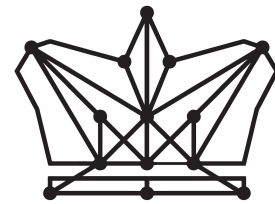
Info Session
October 7th, 2019

Breakdown



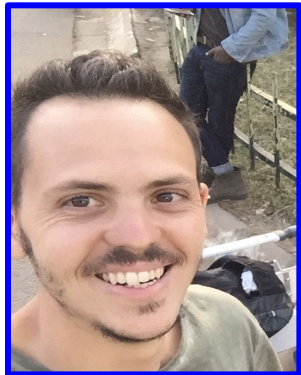
- Our Team
- Mission
- Last Year's Delegations
- 2020 Delegations
- Costs
- Application
- Timeline
- Communication Channels
- Past Participants
- Q&A

Our Team: Delegation Leaders



SIPA Israel Delegation

Innovation & Policy Delegation



Yuval



Daria



Roni



Roee

Sustainability & Policy Delegation



Shenhav



Becca



Jonathan



Isabelle

Mission



SIPA Israel Delegation is a student-led initiative that brings a **diverse group of future leaders** from Columbia University to Israel.

We provide the students with a **nuanced, hands-on learning experience**, in order to create a legacy of Columbia University graduate students' **engagement** with Israel and the region which will **complement, challenge and enrich** their graduate education.

Last Year's Delegations



100 Participants (roughly 160 applicants)

Winter Break

50 students - **Innovation and Policy** 50 students - **Sustainability and Policy**



2020 Delegations



This Year's Dates:

12/29/2019 - 6/1/2020

Two Groups:

1. Innovation & Policy

2. Sustainability & Policy

It's important to note:

- The delegations are **Israel-focused**
- It's an **educational program** that is mainly funded by *iTrek Israel* (itrek.org).
- **Come prepared** - keep challenging us, the speakers you hear and the people you meet.
- We are your peers, **not your tour guides**
- This is a unique opportunity to **learn** from and **interact** with your peers.
- You **won't** get 'indisputable facts' or learn the 'truth'.

Innovation & Policy: Sample Plan

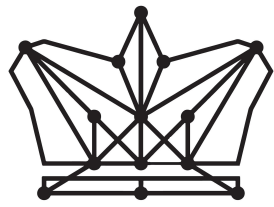


TOPICS: Conflict & security, innovation & business, High Tech industry, minorities & diversity.

PLACES: Jerusalem, West Bank, Golan Heights, Negev Desert, Dead sea, Tel Aviv, Gaza border.

SPEAKERS: Business leaders, Journalists, politicians and practitioners, Leaders of civil society.

Sustainability & Policy: Sample Plan



SIPA Israel Delegation

TOPICS: Sustainability Policy, Resource management, Energy, Biodiversity & Conservation, Sustainable Development, Society, History & Conflict.

PLACES: Tel-Aviv, Jerusalem, Dead Sea, Arava Desert, Sea of Galilee, Golan Heights, West Bank, Gaza Border.

SPEAKERS: Policy & Government, Private Sector, Social Initiatives, Entrepreneurs, Research, activists.



What Do We Cover?



Everything during the trek -

EXCEPT:

- **Plane tickets** to and from Ben Gurion Airport in Tel Aviv
- **\$450** participation fee
- **Insurance** (might be covered by Columbia Insurance)
- **Visa** fee
- Alcohol
- Free-time spending

Application



Who can apply?

- 1st and 2nd-year **SIPA students**
- **Alumni** (priority will be given to current students)

Who are we looking for?

- **Diverse** group of students
- **Strong interest** in Israel and the region
- **Strong interest** in the delegation's specific theme (**Innovation & Policy** or **Sustainability & Policy**)

Application



Application period

- **Opens:** October 7th (Monday) at 9:00pm
- **Closes:** October 25th (Friday) at 11:45pm

What will the application include?

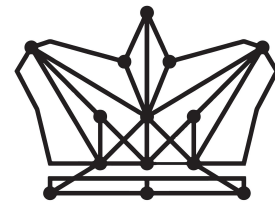
- Personal information + photo
- Short essay
- Résumé
- Short bio

Timeline



- October 7th Application **opens** at 9:00pm
- October 25th: Application **closes** at 11:45pm
- October 28th: **Final decisions** (including waitlist)
- November 11th: **Confirm participation** (flight, payment, visa)
- November 25th: Pre-departure briefing + happy hour

Communication Channels



SIPA Israel Delegation



Find Us On

- Campus Groups “SIPA Israel Group”
- FB page “SIPA Israel Delegation”
- Email: sipaisraeldelegation@gmail.com



SIPA Israel
Delegation
@SIPaisraeldelegation

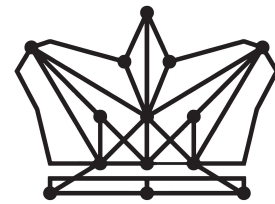
Home

About

Services



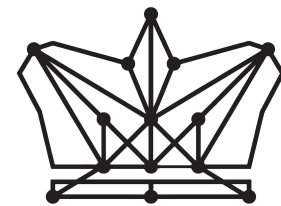
Like Comment Share



SIPA Israel Delegation

Past Participants





SIPA Israel Delegation

Q&A

Thank You!